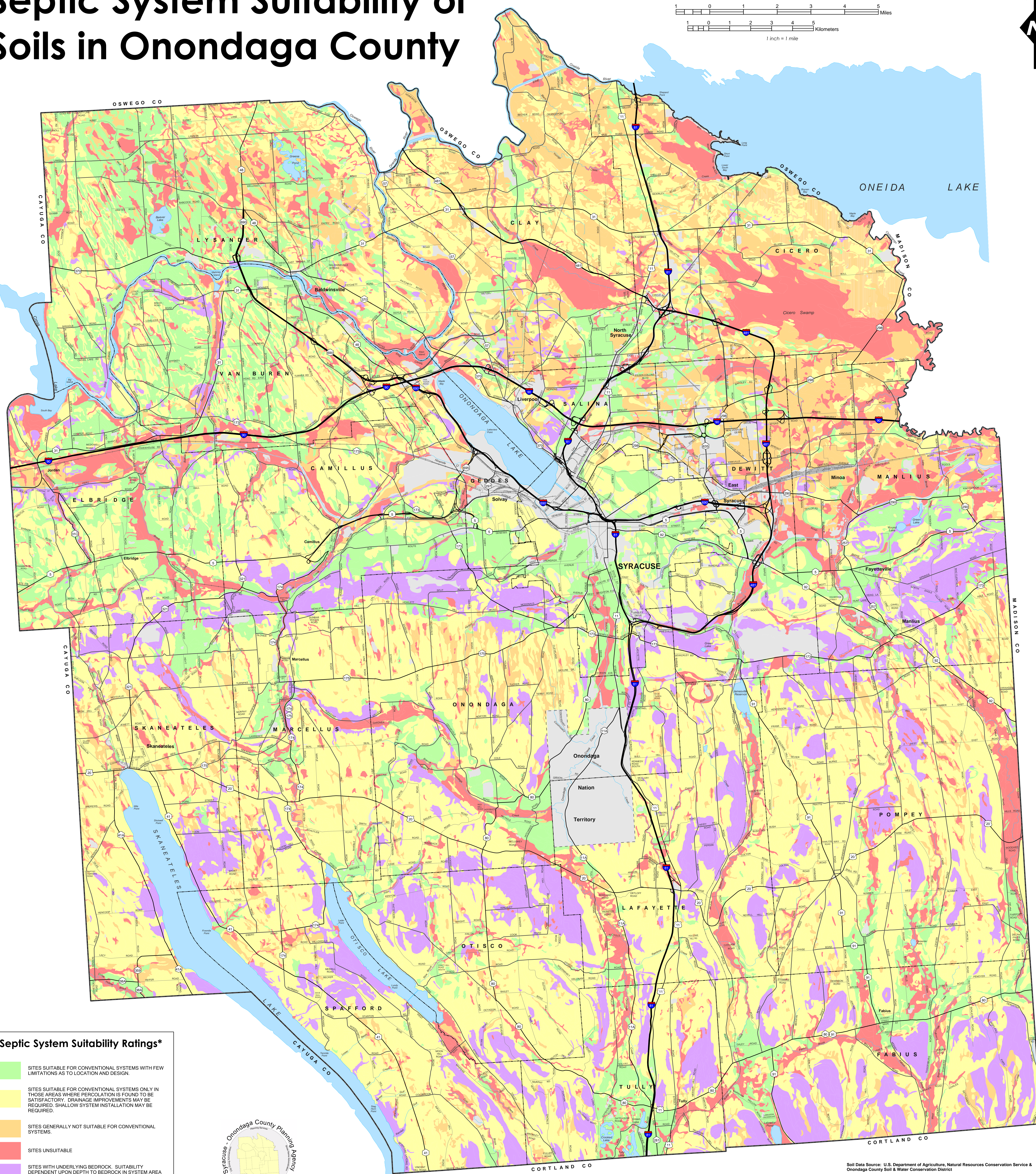
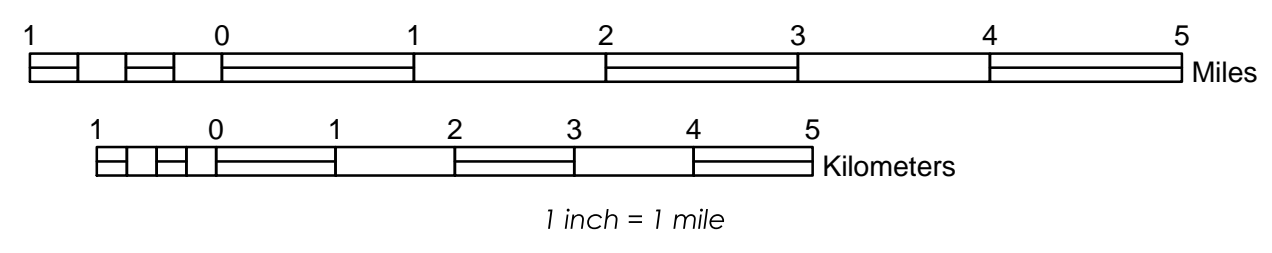


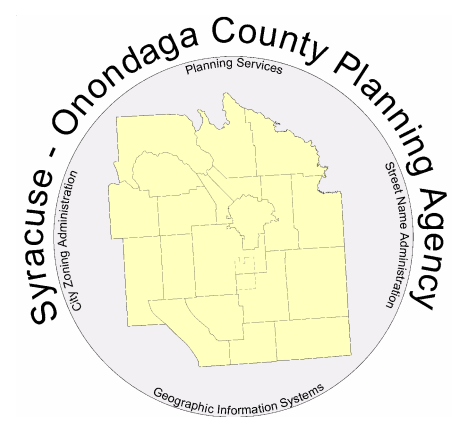
# Septic System Suitability of Soils in Onondaga County



**Septic System Suitability Ratings\***

- SITES SUITABLE FOR CONVENTIONAL SYSTEMS WITH FEW LIMITATIONS AS TO LOCATION AND DESIGN.
- SITES SUITABLE FOR CONVENTIONAL SYSTEMS ONLY IN THOSE AREAS WHERE PERCOLATION IS FOUND TO BE SATISFACTORY. DRAINAGE IMPROVEMENTS MAY BE REQUIRED. SHALLOW SYSTEM INSTALLATION MAY BE REQUIRED.
- SITES GENERALLY NOT SUITABLE FOR CONVENTIONAL SYSTEMS.
- SITES UNSUITABLE
- SITES WITH UNDERLYING BEDROCK. SUITABILITY DEPENDENT UPON DEPTH TO BEDROCK IN SYSTEM AREA AND PERCOLATION OF SOIL ABOVE.
- AREAS NOT RATED

\*Septic system suitability ratings for soils obtained from the Onondaga County Department of Environmental Health.



**PLEASE NOTE:**  
This map is intended for general planning purposes only, and should not be used to determine the suitability of a septic system for a specific site. Contact the Onondaga County Department of Environmental Health for site specific information. Soil data obtained from the U.S. Department of Agriculture's SSURGO database.

Soil Data Source: U.S. Department of Agriculture, Natural Resources Conservation Service & Onondaga County Soil & Water Conservation District  
Source Statement: This Soil Survey Geographic (SSURGO) data base was produced by the U.S. Department of Agriculture, Natural Resources Conservation Service and cooperating agencies for the Soil Survey of Onondaga County, New York. The soils were mapped at a scale of 1:12,000. Enlargement of these maps to scales greater than that at which they were originally mapped can cause misunderstanding of the detail of mapping. If enlarged, maps do not show the small areas of contrasting soil that could have been shown at a larger scale. The depicted soil boundaries and interpretations derived from them do not eliminate the need of onsite sampling, testing, and detailed study of specific sites for intensive users. Thus, this map and its interpretations are intended for planning purposes only. Digital data files are periodically updated. Files are dated, and users are responsible for obtaining the latest version of the data.